



GEMS MODERN ACADEMY

UNIFORM GUIDE

INDEX

➤ Introduction	3
➤ Core Uniform Boys & Girls (Pre KG to KG2)	4
➤ Core Uniform Boys & Girls (G1 to G5)	5
➤ Core Uniform Boys & Girls (G6 to G10)	6
➤ PE Uniform (G1 to G12)	7
➤ Winter Wear (All Grades)	8
➤ Swimwear (All Grades)	9
➤ All Grades Additional Items	10
➤ Uniform Care	11
➤ Shopping & Customer Care	12
➤ Sizing	13-17
➤ Iron on name label	18
➤	

Dear Parent,

We would like to take this opportunity to welcome you to Threads. This guide has been put together to assist you on the following:

- Selecting the correct uniform for your child
- Identifying the suitable size
- Maintaining the uniform
- Ordering
- Retail locations relevant to your school
- Information on customer service

We hope that you will find this guide useful. If you have any comments or suggestions relating to this guide kindly email these to support@threadsme.com.

We wish your child all the success for this academic year and would like to thank you for your continued custom and support.

Thanking You,

Team@  threadsTM

Boys



White Round neck T-shirt with contrast Navy piping on neck and sleeves

Legionnaire Cap
Unisex White



Navy Trousers & Shorts without pleat, without button and without pocket

Trouser For
Winter Only



Girls



White Round neck T-shirt with contrast Navy piping on neck and sleeves

Legionnaire Cap
Unisex White



Front



Back

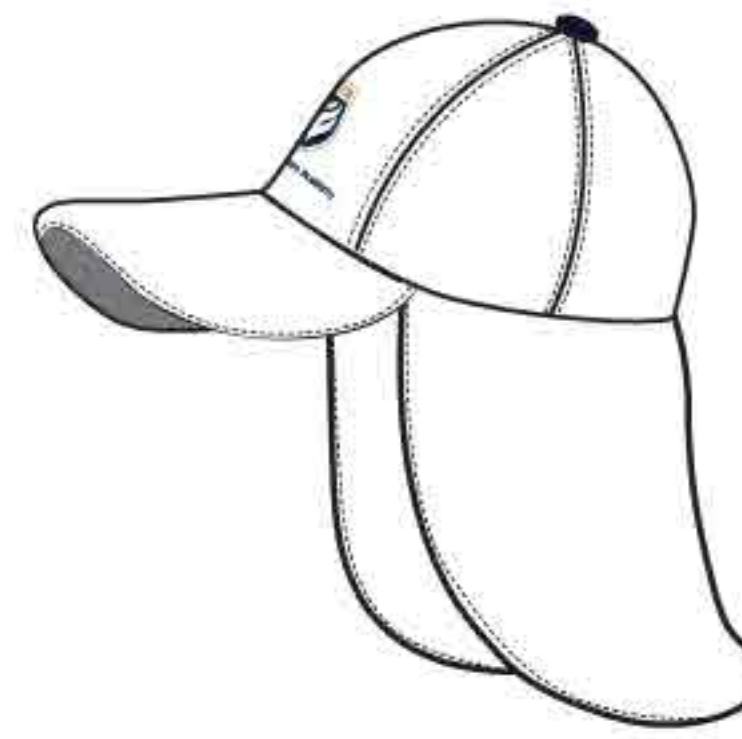


Navy Skorts with self piping on edges

Boys



Tie Mandatory item



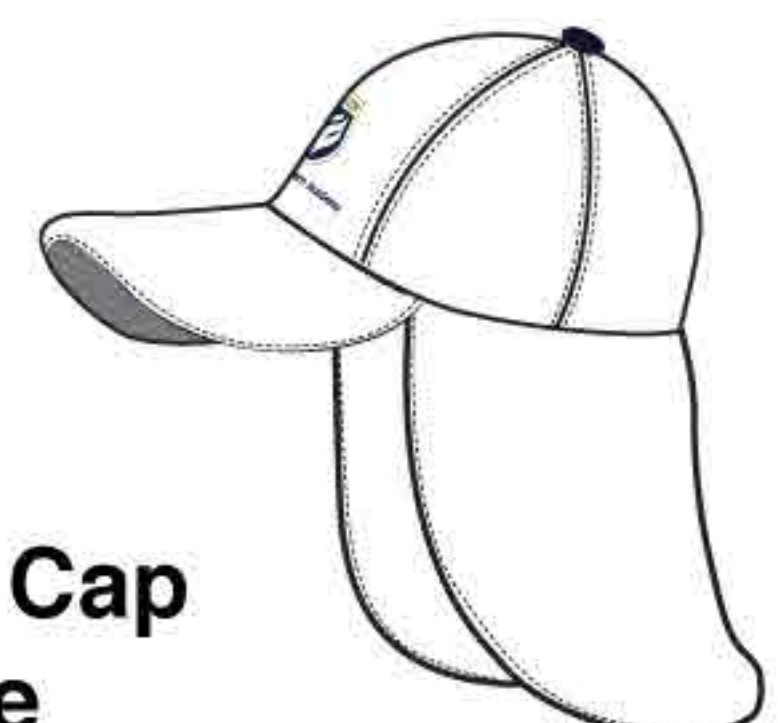
Legionnaire Cap
Unisex White



Belt Mandatory item

Girls

Tie Mandatory item



Legionnaire Cap
Unisex White



Belt Mandatory item

Boys



Tie Mandatory
item

Girls



Tie Mandatory
item



HOUSE COLOURS

RED	GREEN	BLUE	YELLOW
CYGNUS	ORION	PEGASUS	AQUILLA

Unisex Navy Pullover



White Legionnaire Cap

Girls Swimsuit Optional



Navy

Boys Jammer Optional

Front

Back



Shorts Optional
KG1 to KG2



Front

Back



Navy

HEAD SCARF
NAVY
Mandatory for
Islamic Students



BAGS OPTIONAL



12 Inches



16 Inches



18 Inches



Book Bag



Gym Bag

SHOES OPTIONAL



Girls
Black Velcro



Girls Black
without Velcro



Boys
Black Velcro



Boys
Black Lace

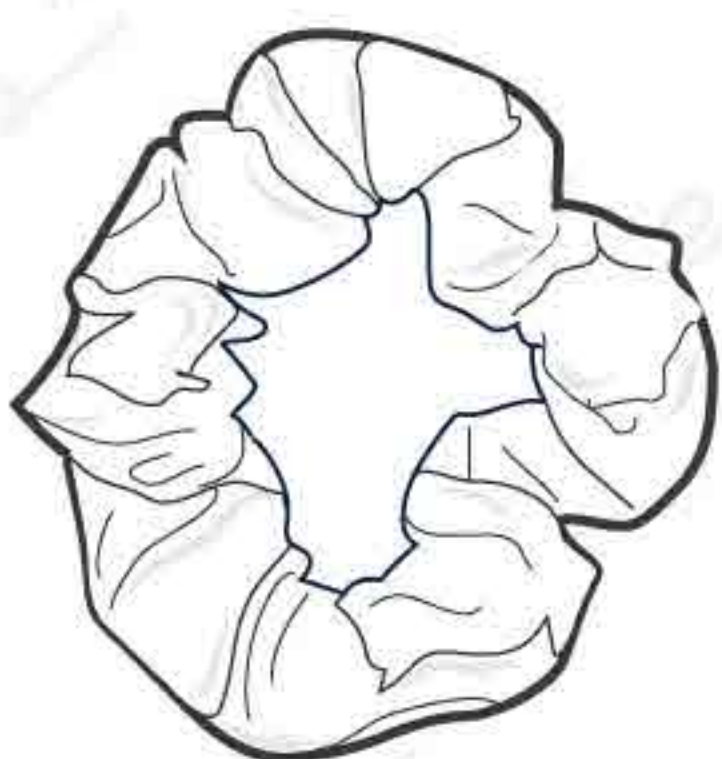


Unisex White
Single Velcro



Unisex
White Lace

HAIR ACCESSORIES OPTIONAL

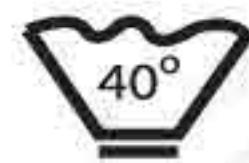


SOCKS NAVY & WHITE



The following guidelines will help you gain longevity from your garment.

WASH CARE SYMBOLS



SKIRTS/TROUSERS/PINAFORE
/SHORTS

Wash at 40 °C. Higher temperatures will cause shrinkage, affect the colour or weaken the fibres. Wash dark colours separately. Avoid strong fabric conditioners as they can break the fibres.

Do not bleach.
Do not tumble dry
pleated garments as the
pleats will disappear.
For best results simply
drip dry after washing.

Warm iron if needed (150°C maximum).
If you want to improve the creases,
use a steam iron or a clean damp
cloth, with a regular iron. Do not iron on
top of Print or Embroidery directly, please
iron on reverse side. Never use a hot iron
directly on the garment.

WASH CARE SYMBOLS



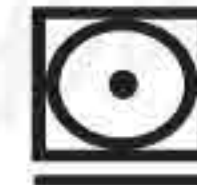
SPORTS SHORTS/TRACK
PANTS/PE POLO SHIRTS

Wash at 40 °C. Higher
Temperatures will cause
shrinkage, affect the colour or
weaken the fibres.
Wash dark colours separately.
Remove promptly. Avoid strong
fabric conditioners.

Do not bleach. These products
will dry very quickly, if left to
dry naturally, but if you want to
do tumble dry, pls do it in
cool/low setting & remove
promptly. Drip dry after washing.

Ironing is not necessary for these
products. However if you still want to iron,
use a cool iron setting (110°C maximum).
Do not iron directly on the garment, place a
clean damp cloth between the garment
and the iron. Do not iron with excessive
heat as this makes the fabric brittle. Do not
iron on top of print or Embroidery directly,
please iron on reverse side.

WASH CARE SYMBOLS



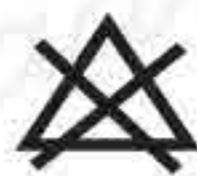
SHIRTS - BLOUSES
65% Polyester,
35% Cotton weave

Can be machine washed on a
Gentle/ polyester/easy care/delicate
Setting, with upto 40°C. Avoid
strong fabric conditioners. Wash
dark colours separately.

Do not bleach.
These garments can be
tumble dried on a cool/low
setting. If the temperature
is higher the fibres can be
damaged and shrinkage
may occur.

With these garments ironing is not always
necessary if it is hung during drying, after
washing. However if you still want do ironing,
change the setting to synthetic/ cool iron
(110°C maximum) and do iron. Ironing will be
easier if the garment is slightly damp. Do not iron
on top of print or Embroidery directly please iron
on reverse side.

WASH CARE SYMBOLS



Knitted fabrics
100% acrylic;
combinations of:
wool/nylon, wool/acrylic,
wool/polyester (jumpers,
cardigans, scarves &
hats); cotton/acrylic;
cotton/polyester;
cotton/nylon

Turn the garment inside out before
washing, to reduce the loose fibres
adhering to the outer surface of other
garments. Use Cool 30°C washing
with gentle/ delicate/wool setting,
with a short spin. Always wash the
garment separately, or with similar
colour garments. Use only mild
detergent if required. Some fabric
conditioners may harm the garment
fibres thereby increasing pilling

Do not bleach.
Do not tumble dry,
the fabric can be damaged
and the neck, welt and cuffs
can lose their elasticity.
Always dry FLAT and
Dry in the shade (direct sunlight
will harm the garment).

NEVER iron on the face
fabric of the garment, as it will
change the appearance of the
garment and cause shine.
Always iron the inside
of the garment.

SHOE CARE - BLACK

Simply remove excess dirt with a cloth and/ or a brush and apply the cream shoe polish
never liquid shine evenly to your shoes.

Make it a point to polish your shoes once in 2 days to restore the appearance of
your shoes.

Store your shoes using a shoe tree, this will help the shoe retain its shape.
If you don't have a shoe tree, stuff the toe cap with newspaper or tissue.

Never store shoes near direct heat.

* KINDLY NOTE THAT ANY PRINTS / LOGOS / EMBELLISHMENTS MUST NOT BE IRONED ON
DIRECTLY BUT INSTEAD ON THE REVERSE.

Visit our retail shop at Al Quoz located behind Gold & Diamond Park - next to Arab Tech and near to First Gulf Metro Station

Visit our retail shop at Oud Metha, Near Dunes Hotel Apartment, Opp. to Al- Bader Mini Mart Building

(For location map please visit - www.threadsme.com or email us on support@threadsme.com) The timing of retail shops will be from 11 am to 9 pm from Saturday to Thursday except peak seasons. During peak seasons, the shops will be operational 7 days a week. Exact date and timings of peak seasons will be displayed in our website.

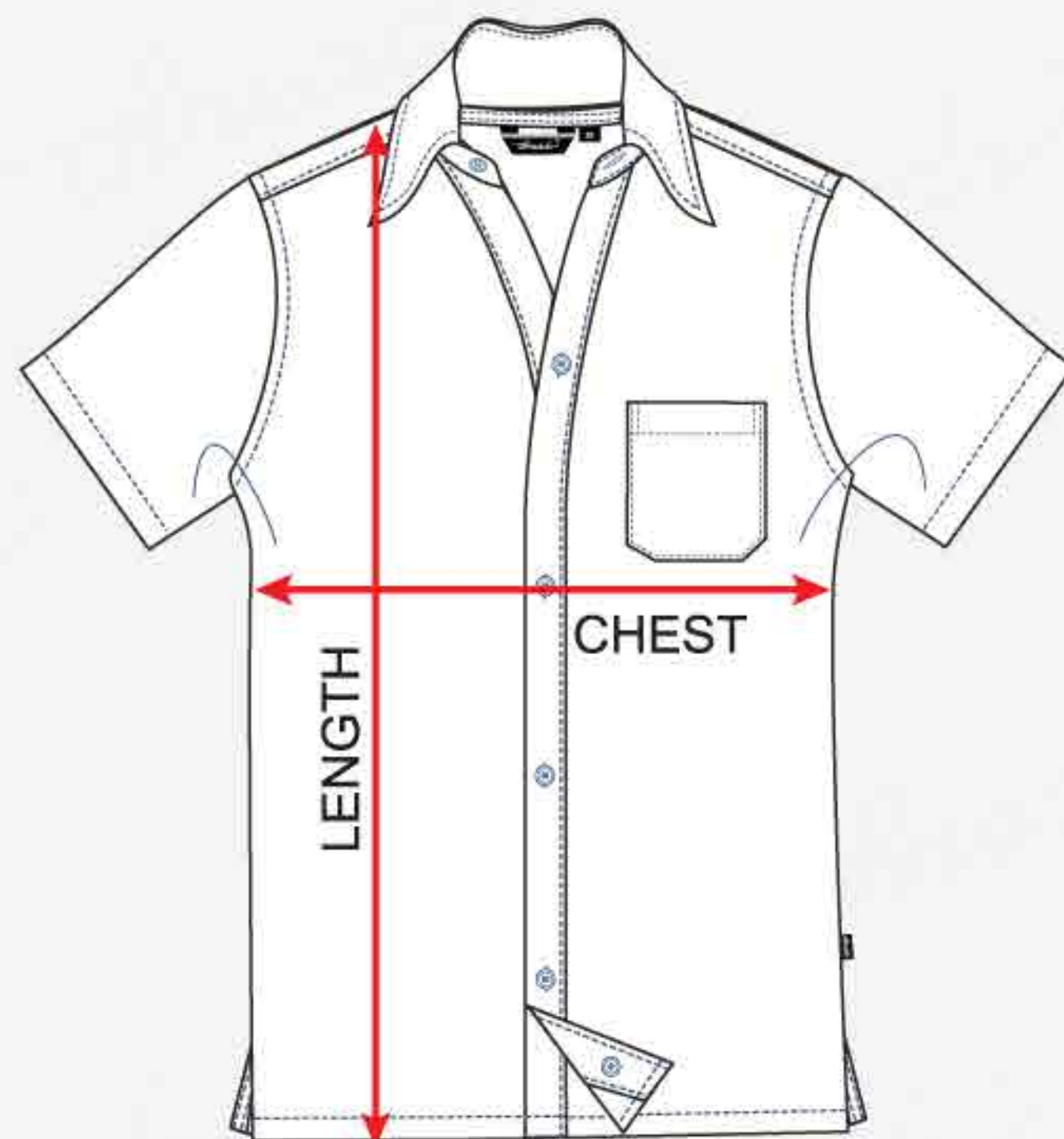
Shop online at www.threadsme.com You can now shop online at www.threadsme.com, Subject to availability your order will be dispatched within 2 - 4 working days to your registered / requested location. Once your order has been dispatched you will be notified of the tracking number and you can track your order online.

Made to measure (custom-made uniforms) option is also available if your preferred size is not in stock. The standard delivery time is 15 days during the off peak seasons and will extend up to 30 days during the peak seasons. To request a made to measure form or require any assistance on made to measure kindly send an email to support@threadsme.com, alternatively you can request an online appointment at www.threadsme.com

Online ordering of made to measure uniforms is available at Threads' e-commerce website. The processes of ascertaining the measurements are clearly indicated with simple diagrams.

Free collection point deliveries: The customers can collect the online order (readymade / made to measure) from any retail shop of Threads as per their conveniences without paying for the courier charges. The collection point needs to be properly indicated at the time of placing the online order.

At Threads we take our commitment to customer service very seriously. Customer concerns and queries can be registered at support@threadsme.com or through our toll free number (800-THREADS). A customer services representative will respond to your query within 24 working hours.

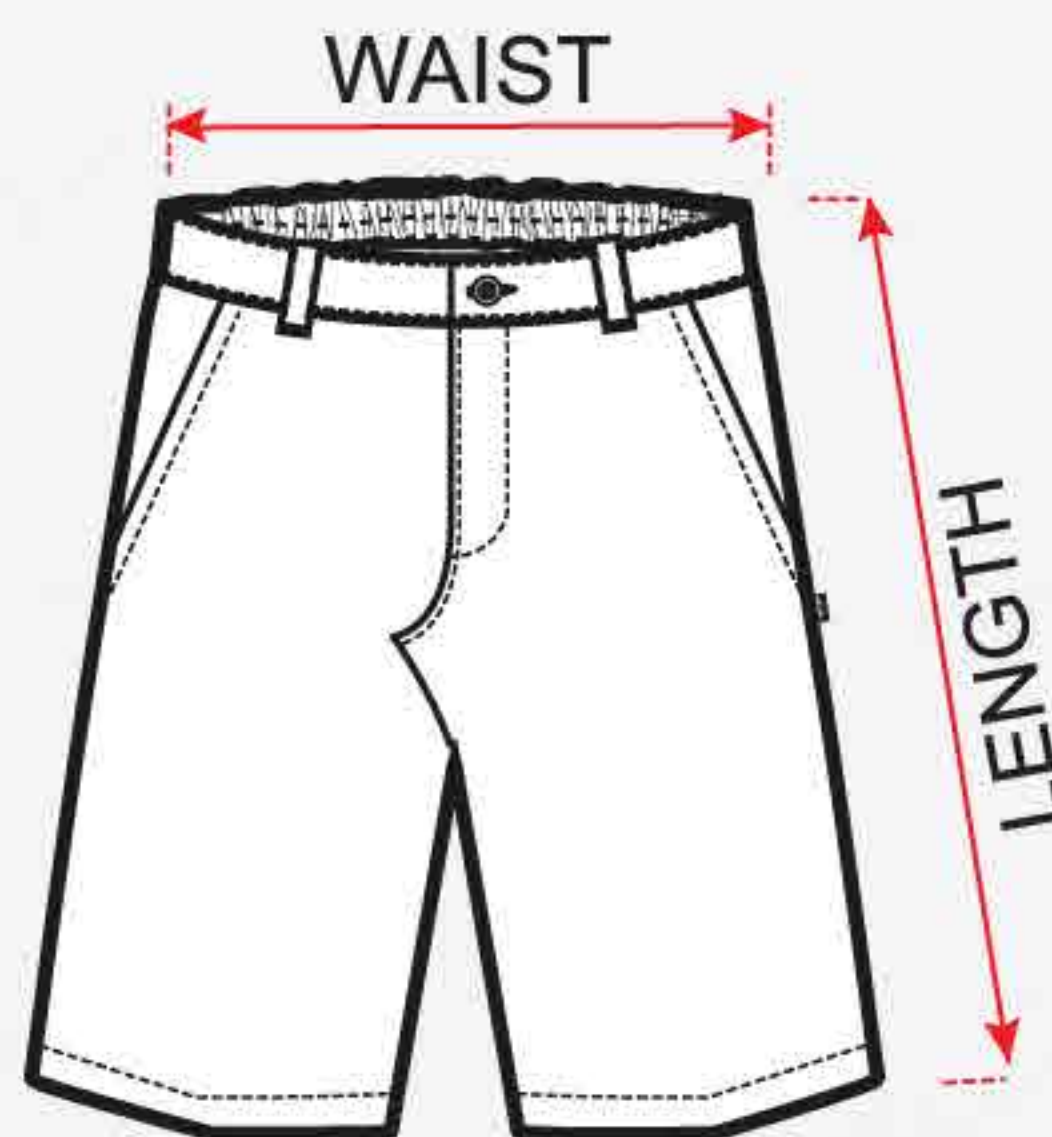


Shirt & Blouse

Size	2	4	6	8	10	12	14	16	18	20	22	24	26	28
Full Chest	68	71	74	77	80	83	86	89	92	95	98	101	104	107
Length	48	50	52	54	56	58	60	62	64	66	68	70	72	74

Size	30	32	34											
Full Chest	110	113	116											
Length	76	78	80											

All measurements are in centimeters



Boys Shorts

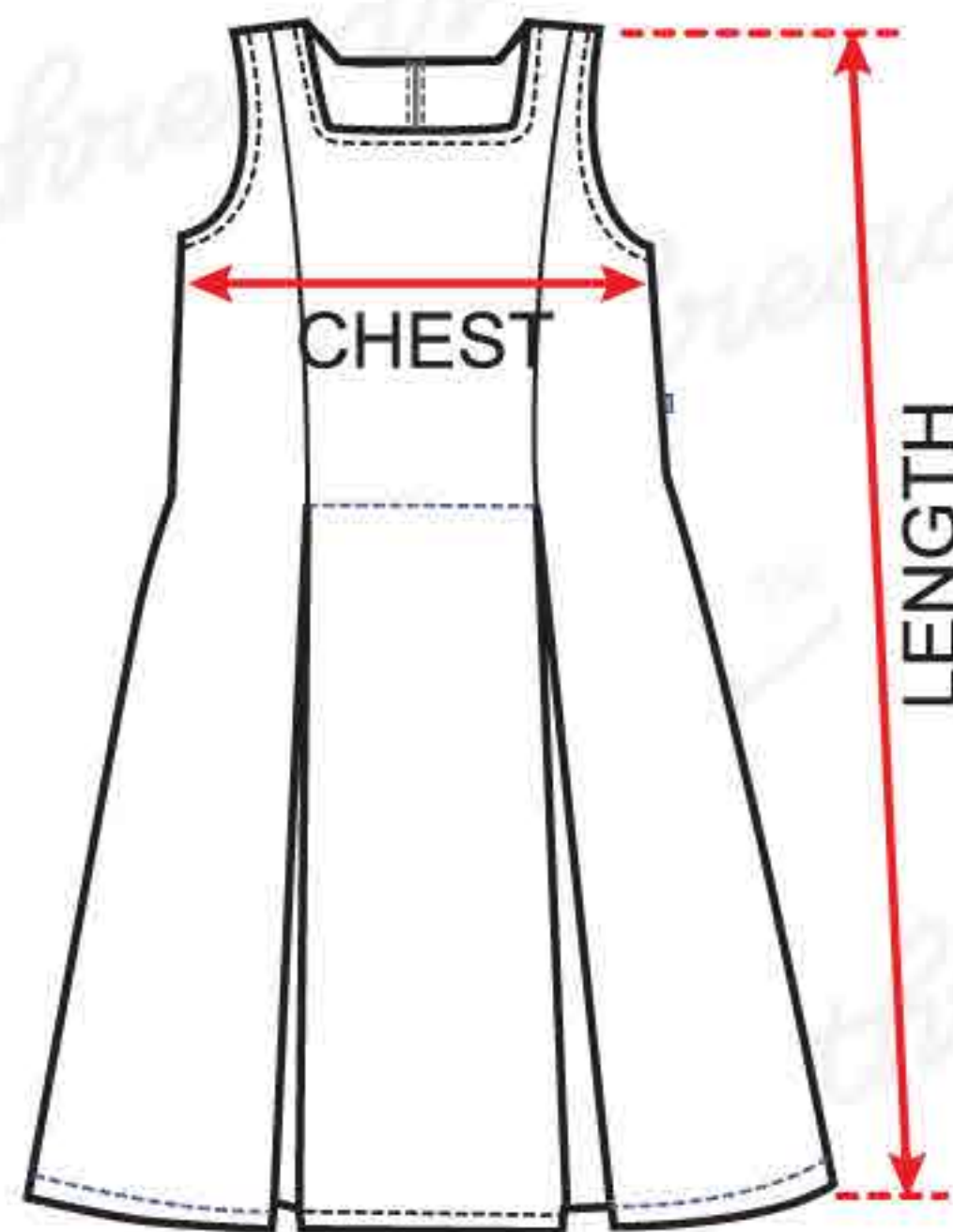
Size	2	4	6	8	10	12	14	16	18	20	22	24	26	28
Waist	47	50	53	56	59	62	65	68	71	74	77	80	83	86
Length	27	29	31	33	35	37	39	42	45	47	49	51	53	55

Size	30	32	34											
Waist	89	92	95											
Length	57	59	61											

All measurements are in centimeters

NOTE

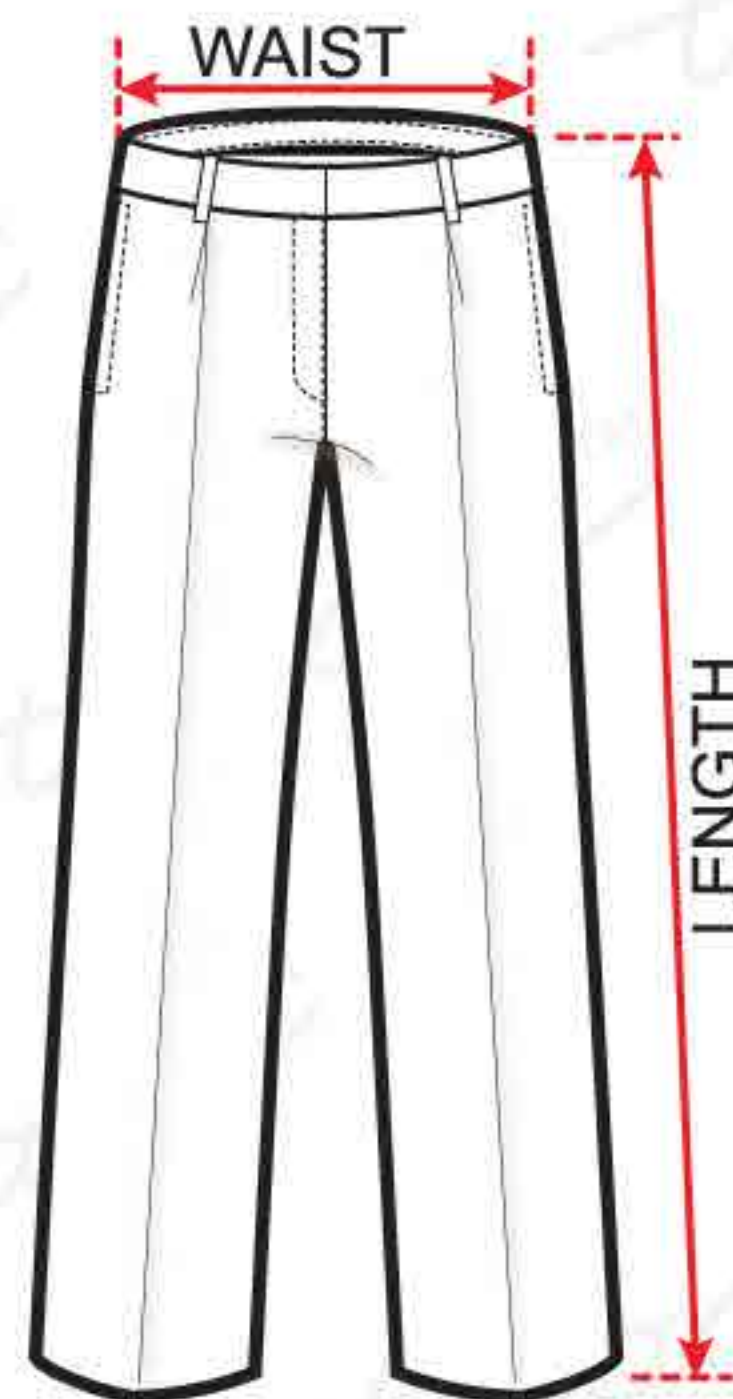
All measurements are in centimeters
These sizes are only a guide and may vary for the Individual body type.



Pinafore

Size	4	6	8	10	12	14	16	18						
Full Chest	64	68	72	76	80	84	88	92						
Length	62	64	66	68	70	72	74	76						

All measurements are in centimeters



Boys Trousers

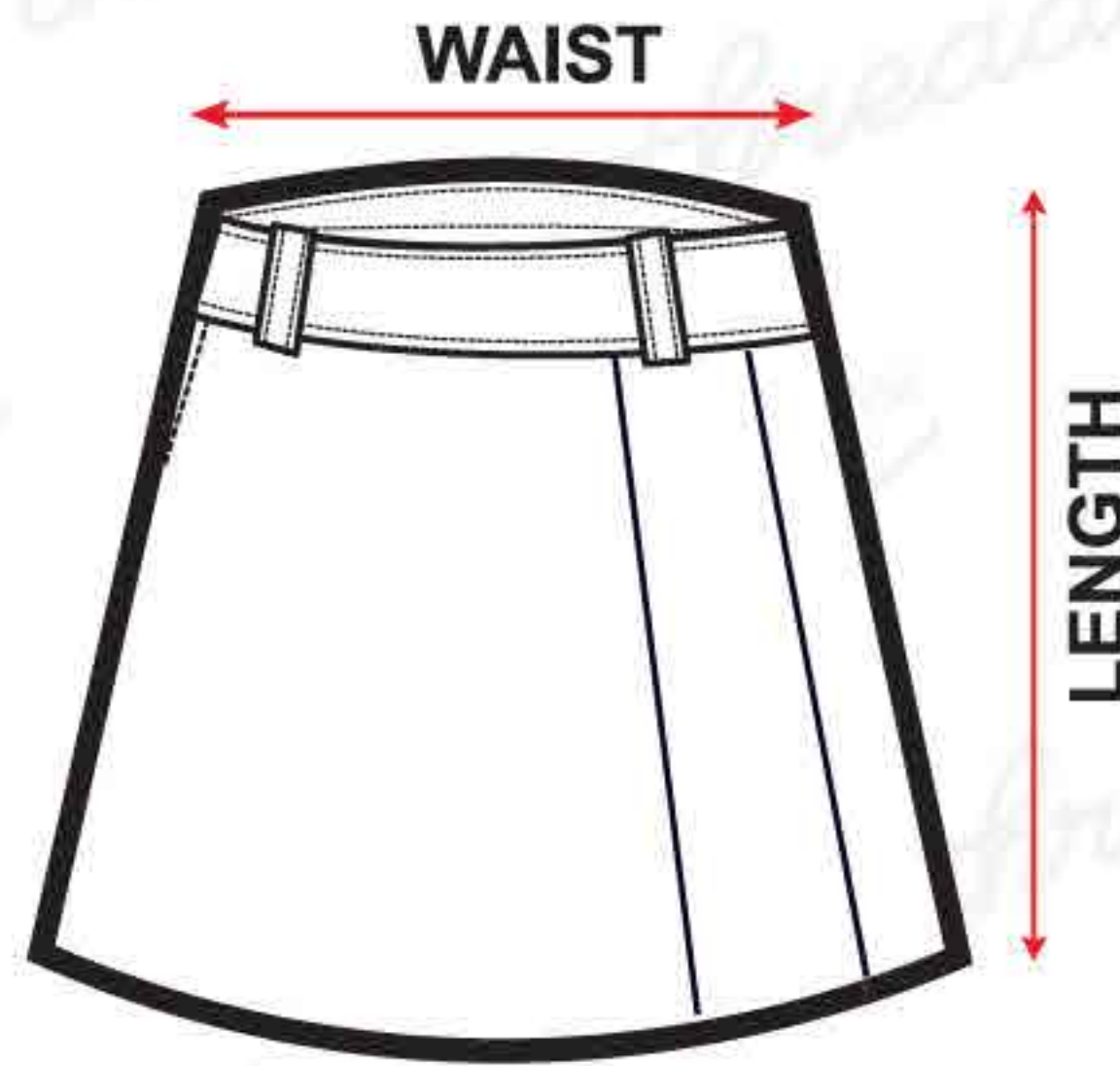
Size	2	4	6	8	10	12	14	16	18	20	22	24	26	28
Waist	47	50	53	56	59	62	65	68	71	74	77	80	83	86
Length	65	69	72	76	84	87	90	93	96	99	102	105	108	111
Size	30	32	34											
Full Waist	89	92	95											
Length	114	118	121											

All measurements are in centimeters

NOTE

All measurements are in centimeters

These sizes are only a guide and may vary for the Individual body type.

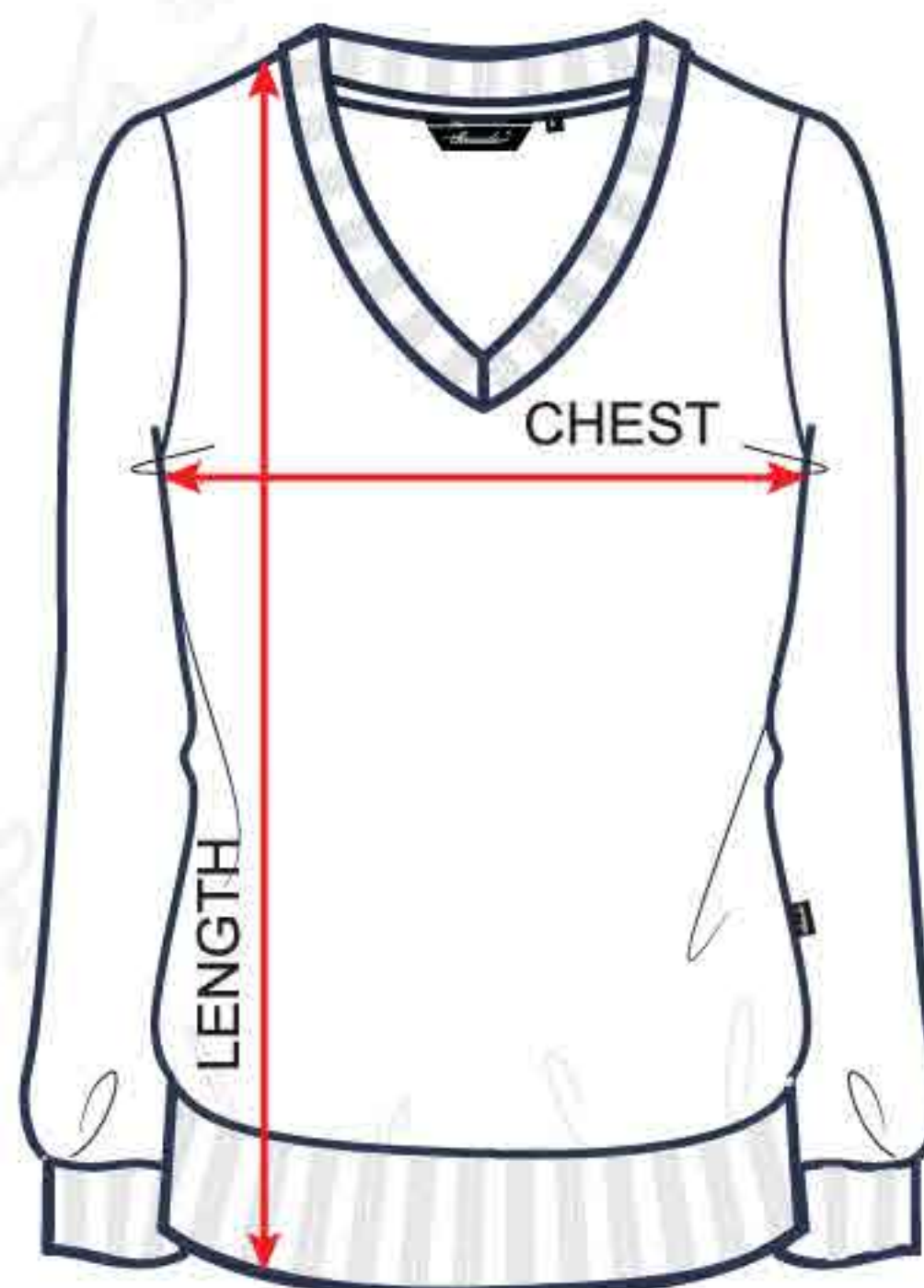


Knee Skirt

Size	2	4	6	8	10	12	14	16	18	20	22	24	26	28
Full Waist	57	59	61	64	67	70	73	76	79	82	85	88	91	94
Length	38	40	42	46	48	52	54	56	58	60	62	64	66	68

Size	30	32												
Full Waist	97	100												
Length	70	72												

All measurements are in centimeters



Pullover

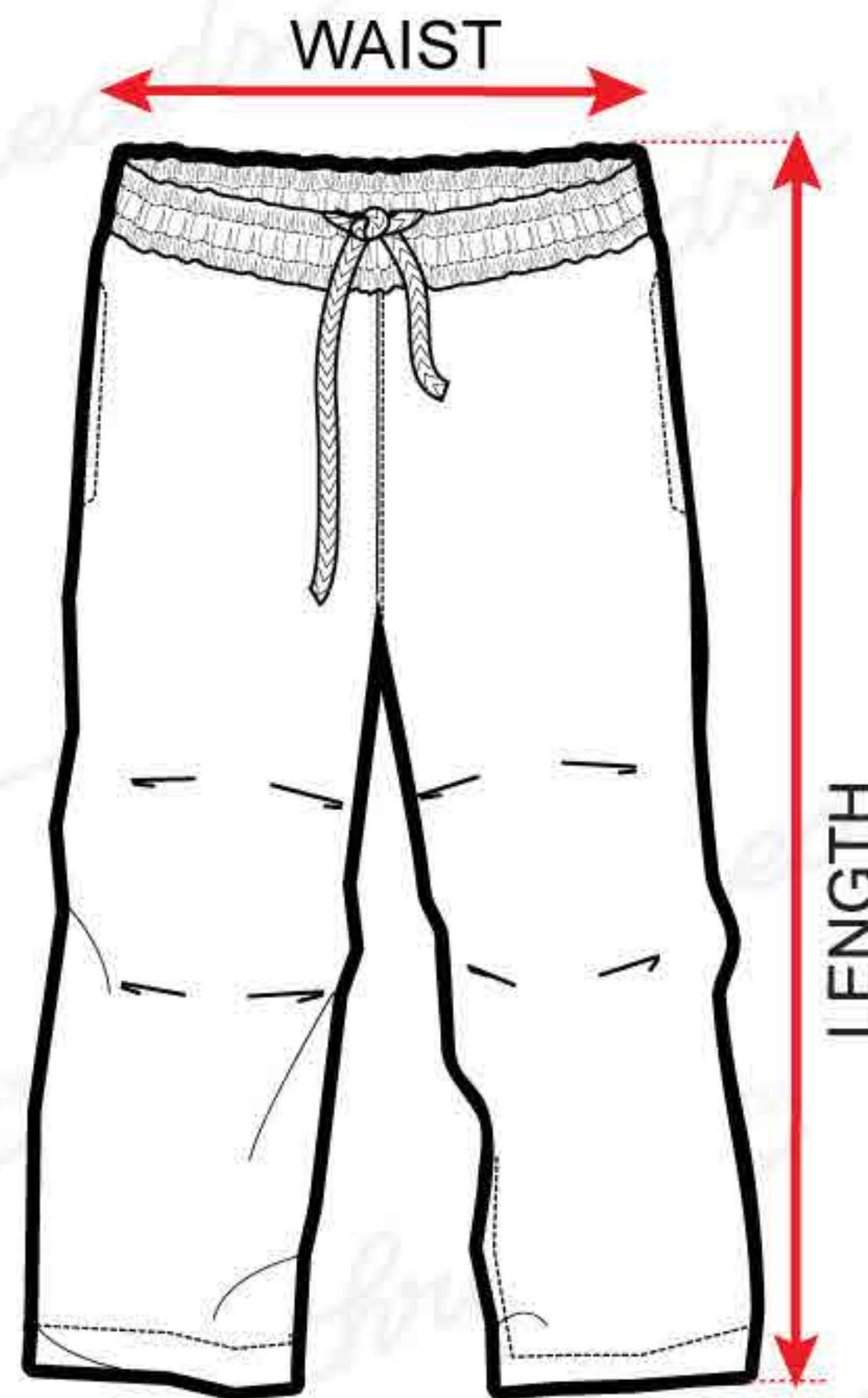
Size	18	20	22	24	26	28	30	32	34	36	38	40	42	44
Full Chest	57	61	65	69	73	77	81	85	89	93	97	101	105	109
Length	39	41	43	45	47	49	52	54	56	58	60	62	64	66

Size	46	48												
Full Chest	113	117												
Length	68	70												

All measurements are in centimeters

NOTE

All measurements are in centimeters
These sizes are only a guide and may vary for the Individual body type.

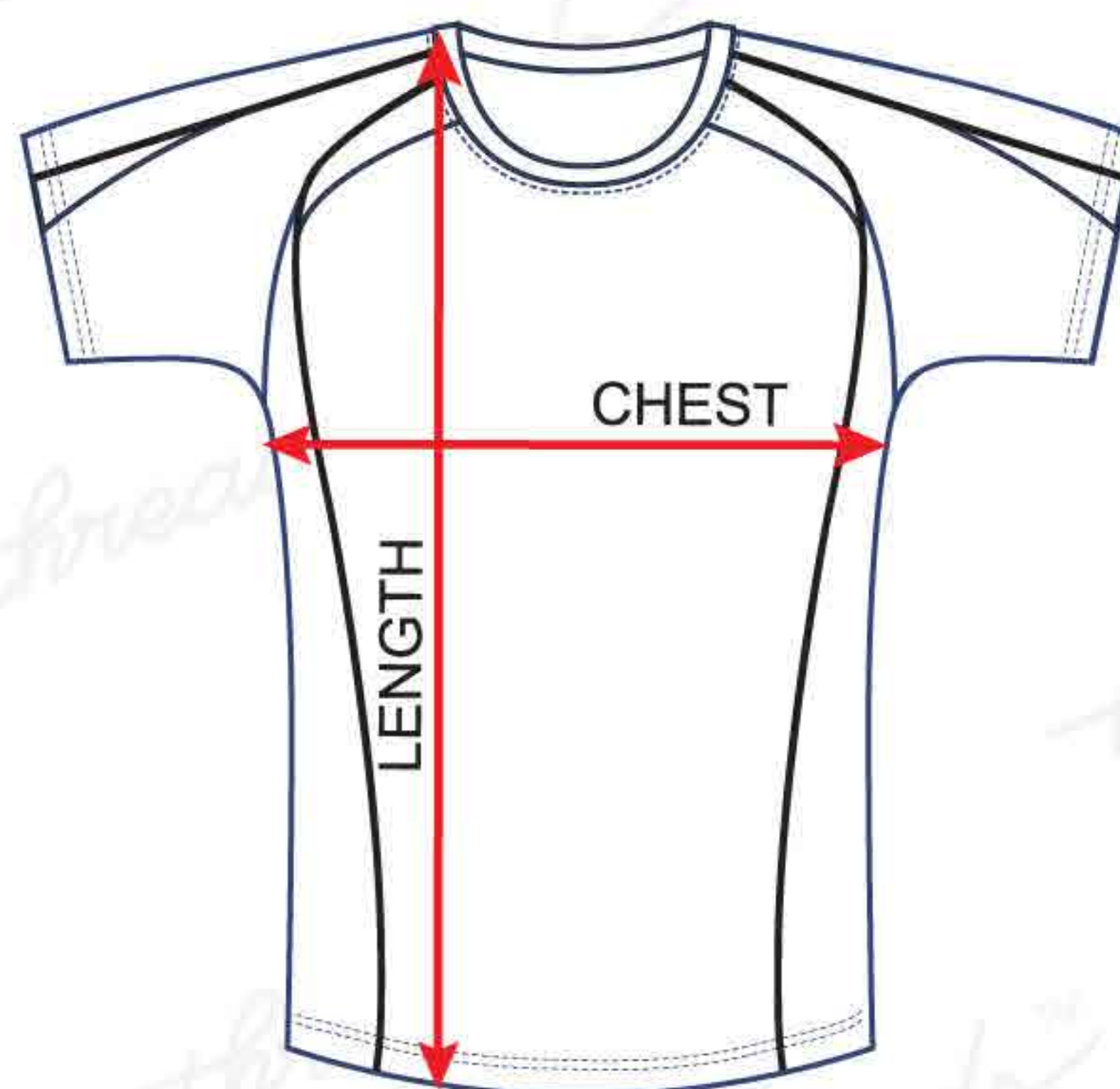


UNISEX PE TRACK PANT

Size	2	4	6	8	10	12	14	16	18	20	22	24	26	
Full Waist	47	50	53	56	59	62	65	68	71	74	77	80	83	
Length	64	68	72	76	80	83	86	89	92	95	98	101	104	

Size	28	30	32	34	36									
Full Waist	86	89	92	95	98									
Length	107	110	113	116	119									

All measurements are in centimeters



UNISEX PE T-SHIRT

Size	2	4	6	8	10	12	14	16	18	20	22	24	26	28
Full Chest	60	63	66	69	72	75	78	81	84	87	90	93	96	99
Length	39	41	43	45	47	49	51	53	55	57	59	61	63	65

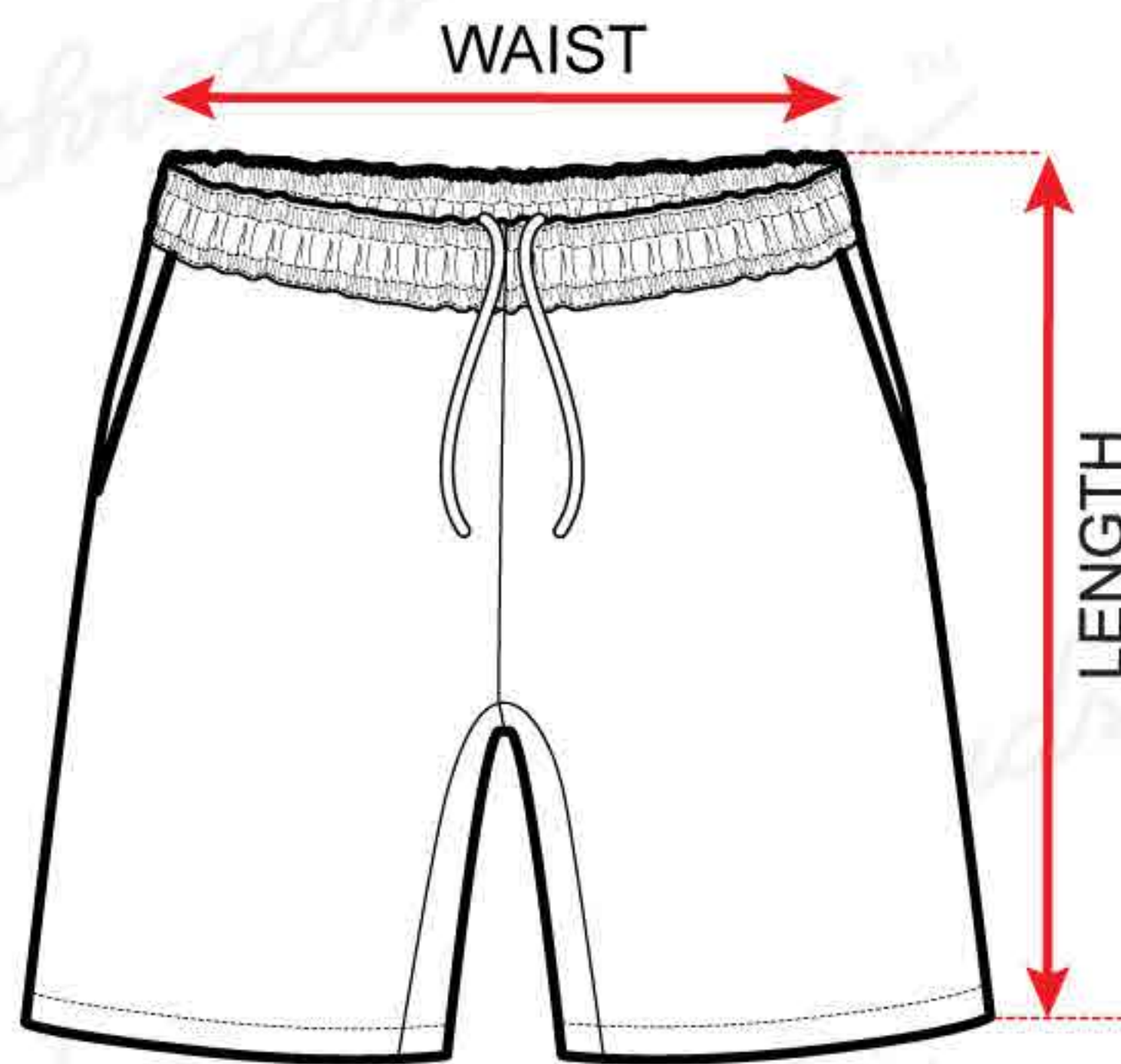
Size	30	32	34											
Full Chest	102	105	108											
Length	67	69	71											

All measurements are in centimeters

NOTE

All measurements are in centimeters

These sizes are only a guide and may vary for the Individual body type.

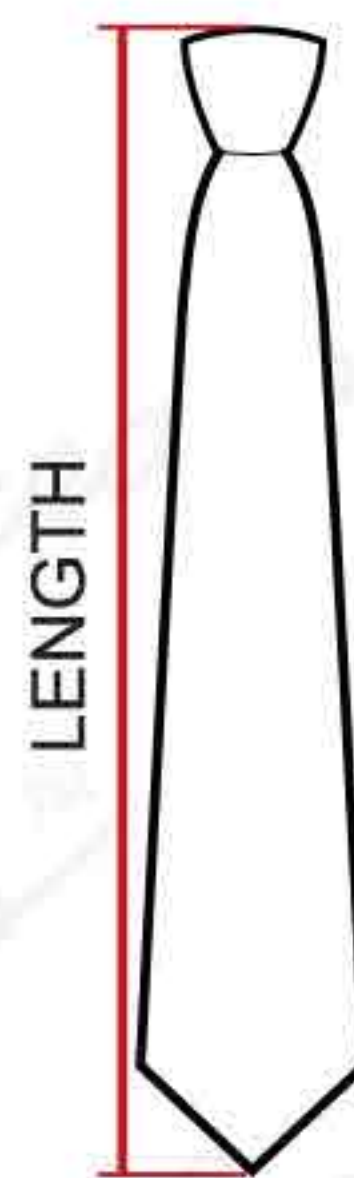


UNISEX PE SHORTS

Size	0	2	4	6	8	10	12	14	16	18	20	22	24	26
Waist	44	47	50	53	56	59	62	65	68	71	74	77	80	83
Length	26	28	30	32	34	36	38	39	41	43	45	47	49	51

Size	28	30	32	34	36									
Waist	86	89	92	95	98									
Length	53	55	57	59	61									

All measurements are in centimeters



Tie

SIZE:	S	M	L					
CLIP TIE LENGTH	13	16	20					
FULL TIE LENGTH	43	49	59					

Shoes

UK SIZE	9	10	11	12	13	1	2	3	3.5	4	4.5	5	6	7	8	9	10	11	12	13
EU SIZE	27	28	29	30	31	32	33	34	35	36	37	38	39	40	41	42	43	44	45	46

NOTE

All measurements are in centimeters

These sizes are only a guide and may vary for the Individual body type.

Iron on name labels are used to identify the clothes of your children. Our Iron on name labels are perfect for labelling virtually any type of clothing garment. The Iron on labels are suitable for any fabric which can be ironed. Iron on labels take seconds to apply and are guaranteed not to peel off or fade in a hurry. Please make sure you follow the below instructions.

- Remove a label from the clear backing material
- Set your iron to the hottest setting. NO STEAM...!
- Wait until the iron gets hot
- Place label on garment in desired position
- Cover label with a thin white clear A4 paper
- FIRMLY press heated iron on A4 paper for 15 seconds
- Verify your application time and iron temperature
- Apply labels to CLEAN, thoroughly dry garments only. Labels applied to soiled or damp garments will not adhere properly
- Allow garment and label to cool to room temperature. Then try to peel the label off with your fingernail. If you can peel it off, your iron is not hot enough. Use another iron or reapply it for 15-20 seconds

Jennifer

